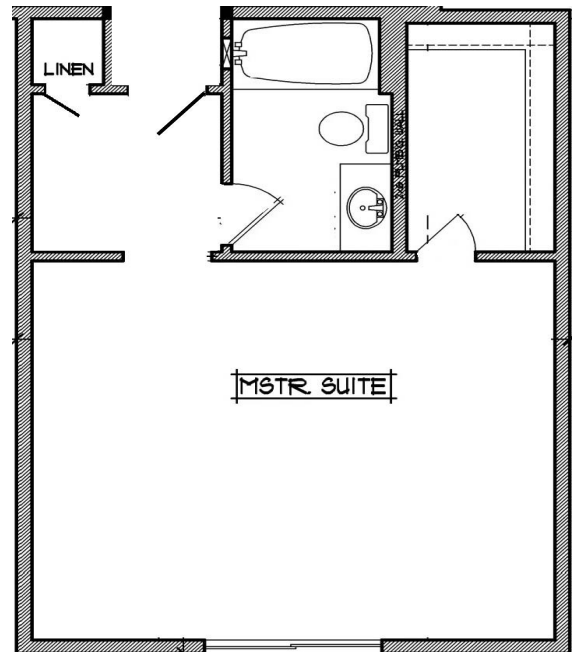
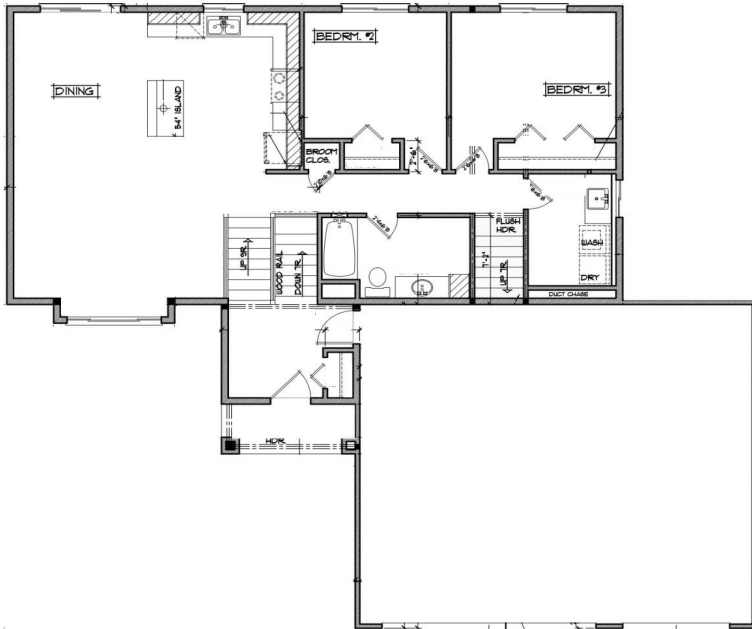


The "Rosepine" Plan

- 3 Bedrooms
- 2 Bathrooms
- 3 Car Garage
- 1,648 Finished Sq. Ft.
- Multi-Level



Century Building Team, LLC.
 www.CenturyTeamInc.com
 O: (651) 466-0609
 F: (651) 433-4275
 info@centuryteaminc.com
 MN Lic. #: BC650854



Marketed By:

Tony C. Janu
 651-270-1865
 tony@centuryteaminc.com

Notes:



Optional features may be shown that are not standard or come with this stock plan. This is an artist conception only and may change without notice. Please consult with the sales professional with any questions and details.

