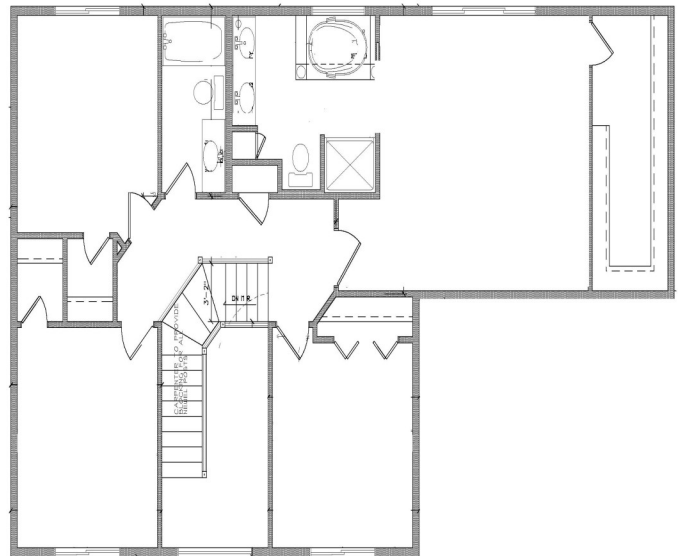
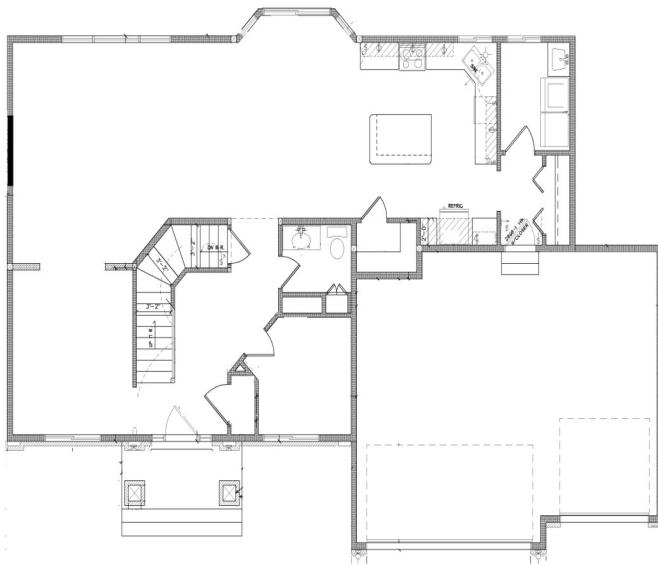


The "Pineridge" Plan

- 4 Bedrooms
- 3 Bathrooms
- 3 Car Garage
- 2,445 Finished Sq. Ft.
- Two Story



Century Building Team, LLC.
www.CenturyTeamInc.com
O: (651) 466-0609
F: (651) 433-4275
info@centuryteaminc.com
MN Lic. #: BC650854



Marketed By:

Tony C. Janu
651-270-1865
tony@centuryteaminc.com
Century Real Estate Team, LLC.

Notes:



Optional features may be shown that are not standard or come with this stock plan. This is an artist conception only and may change without notice. Please consult with the sales professional with any questions and details.

